

Leelee Knits

Knitting and Crochet



NIGHT-NIGHT BABY BLANKET CROCHET PATTERN

www.leeleeknits.com



This pattern is copyright protected - PLEASE DO NOT COPY, SHARE, ADJUST OR RESELL the pattern.

Leelee Knits

 Knitting and Crochet

Supplies/Materials:

Here is what you will need to make this baby blanket:

- Size D/3 (3.25 mm) crochet hook.
- [Knit Picks CotLin](#) DK weight yarn in the following colours:
 - 6 Skeins Clarity (Colour A)
 - 6 Skeins Whisker (Colour B)
- Scissors.
- Tapestry/Yarn needle to weave in ends.

Finished Size:

Finished blanket measures: 31" wide X 45" long.

Gauge:

4.25 stitches, 3 rows = 1 Inch in Herringbone Half Double Crochet stitch.

Abbreviations:

CH	Chain
SC	Single Crochet
HHDC	Herringbone Half Double Crochet: Yarn over, insert hook into next stitch, yarn over and draw through the stitch AND first loop on hook, yarn over, draw through remaining loops on hook.
A	Colour A
B	Colour B

Leelee Knits

 Knitting and Crochet

Notes Before You Start:

This blanket is created using the Herringbone Half Double Crochet (HHDC) stitch and two colours/strands of yarn.

- All rows are worked with both strands of yarn to keep the gauge and tension consistent.
- Crochet over the yarn not in use when working each HHDC to prevent floats and make blanket reversible.
- **Change colours mid-stitch:** Work the stitch before a colour change to its final yarn over and draw through. Switch to the new colour and then work the final yarn over and draw through in the new colour. It is important to change colours like this because if you crochet the entire stitch in one colour and then switch, the first colour will carry over and the design will not look right.

I recommend that you watch my video tutorial: [How to Change Colours While Crocheting the Herringbone Half Double Crochet](#) before you start.

Pattern:

With A, CH 132 (or a multiple of 10 plus 2).

HHDC in 3rd chain from hook, while holding B at the back, and crocheting over B. Every row is worked in HHDC with a CH2 at the end of the row for the turning chain. Follow the colour scheme below for each row (you can follow the chart or the written directions).

Written Directions:

Repeat the five rows of the colour scheme below until your blanket measures just over 44 inches. Continue to **Border and Finishing**.

Row 1: *5A, 5B; repeat from * to end of row.

Row 2: *4B, 1A, 1B, 4A; repeat from * to end of row.

Row 3: *3A, 2B, 2A, 3B; repeat from * to end of row.

Row 4: *2B, 3A, 3B, 2A; repeat from * to end of row.

Row 5: *1A, 4B, 4A, 1B; repeat from * to end of row.

Leelee Knits

Knitting and Crochet

Chart:

Each cell represents one HHDC and each row represents one row of crochet.

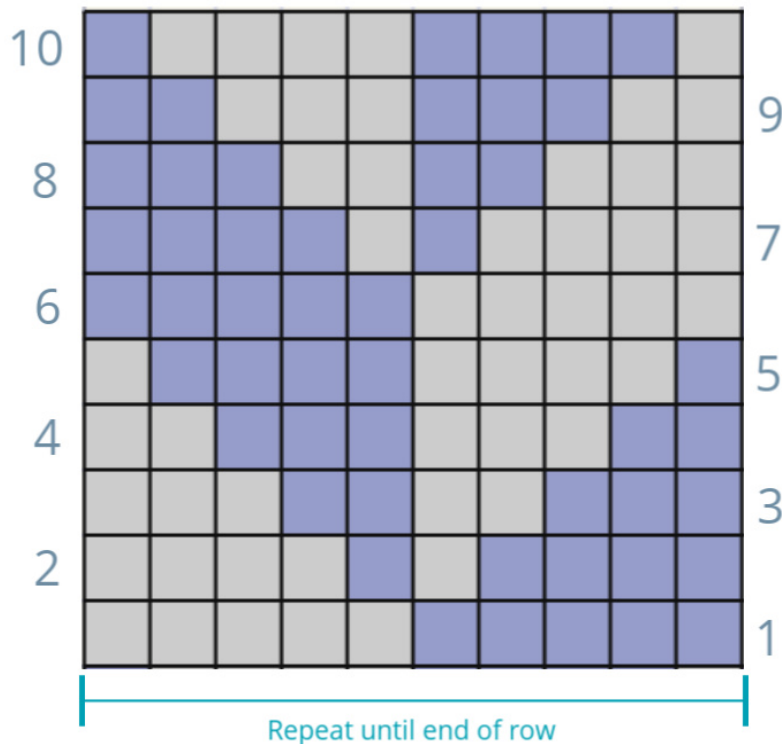
When reading the colour chart, note that the odd numbered rows are the right side, and the even numbered rows are the wrong side.

- Right side rows are to be read right to left
- Wrong side rows are to be read left to right

Repeat the 10 rows of the colour chart until your blanket measures just over 44 inches. Continue to **Border and Finishing**.

Colour Chart

*Numbers represent each row



Leelee Knits

Knitting and Crochet

Border and Finishing:

Work around the border of the blanket evenly in single crochet. Make sure that you work 3 SC in each corner of the border. When you have completed two rounds, join to first SC with a slip stitch. Fasten off and weave in the ends!

