



# SIX SPRINGTIME CROCHET PATTERNS

LEELEE KNITS KNITTING & CROCHET

## Springtime Washcloths



This pattern is copyright protected - PLEASE DO NOT COPY, SHARE, ADJUST, OR RESELL.

# Leelee Knits

 Knitting and Crochet

## Materials:

Here is what you will need to make all three washcloths:

- Size D/3 (3.25 mm) crochet hook.
- Paintbox Yarns Cotton DK (100% Cotton):
  - 1.5 Skeins Champagne White.
  - One Skein Pale Lilac.
- Stitch Marker.
- Scissors.
- Yarn Needle.

## Measurements:

Each cloth measures 7.5" X 7.5".

## Gauge:

6 stitches X 6 Rows = 1" in single crochet.

## Abbreviations:

CH: Chain

SC: Single Crochet

# Leelee Knits

 Knitting and Crochet

## Notes before you start:

The washcloths are created using the tapestry crochet technique.

Video Tutorial: [How to Crochet with Two Colors - Reversible Tapestry Crochet](#)

When reading the pattern grid, note that the odd numbered rows are the right side, and the even numbered rows are the wrong side.

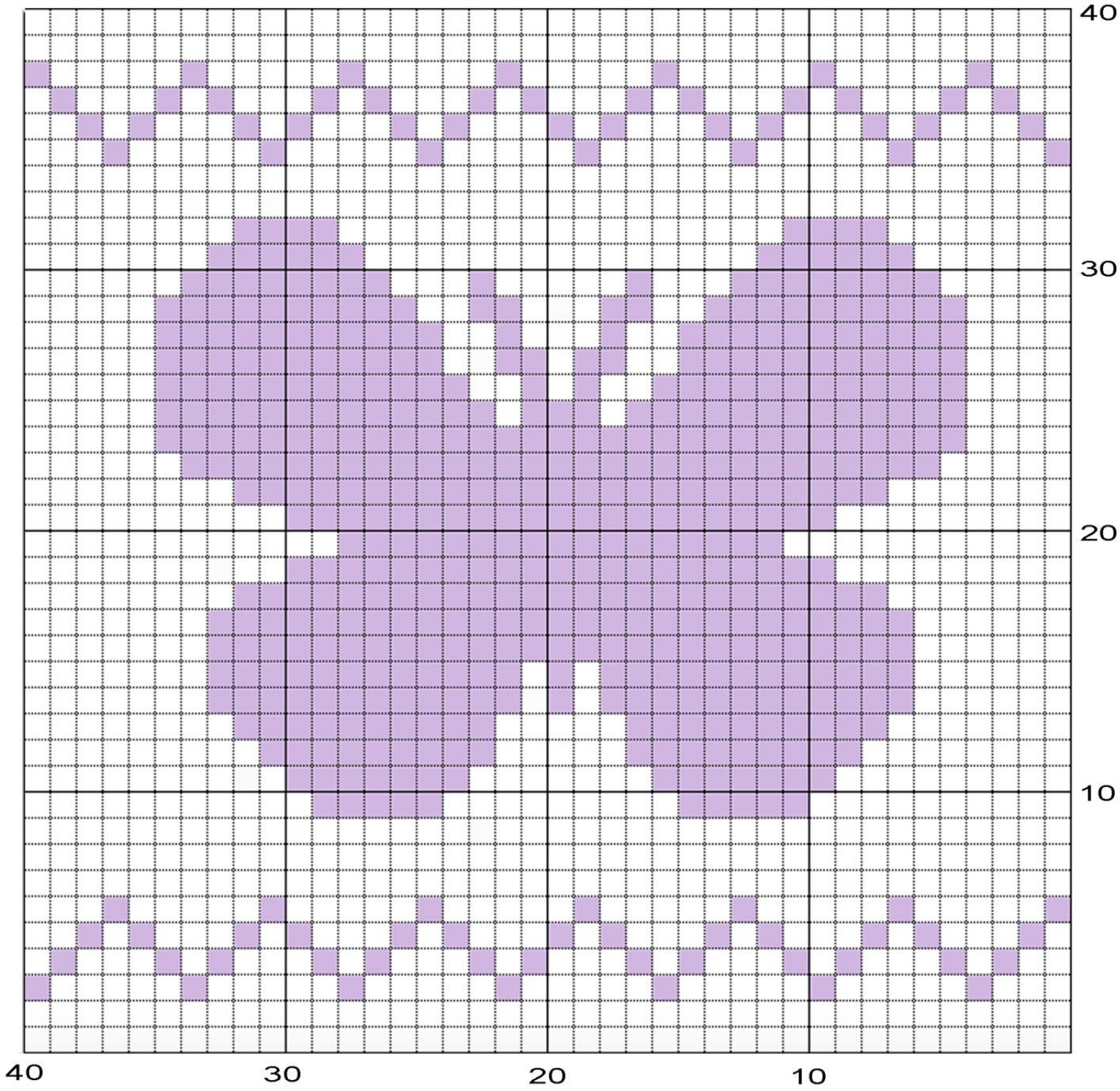
- It's a good idea to print the grid and highlight the rows as they are completed.
- Right side rows are to be read right to left
- Wrong side rows are to be read left to right
- All rows are worked with both strands of yarn to keep the gauge and tension consistent. It is best to crochet tightly to avoid the second color being seen through the stitches.
- When working a right side row, hold secondary yarn color to the back of your work.
- When working a wrong side row, hold secondary yarn color to the front of your work.
- Crochet over the second yarn (yarn not in use) when working each SC to avoid floats and make washcloths reversible.

## Washcloth Patterns:

With Main Color, CH 41 (40 plus 1 for turning chain). Work all stitches in single crochet (plus one turning chain at the end of each row). Follow color charts below starting at bottom right for row 1. Each cell represents one SC and each row represents one row of crochet.

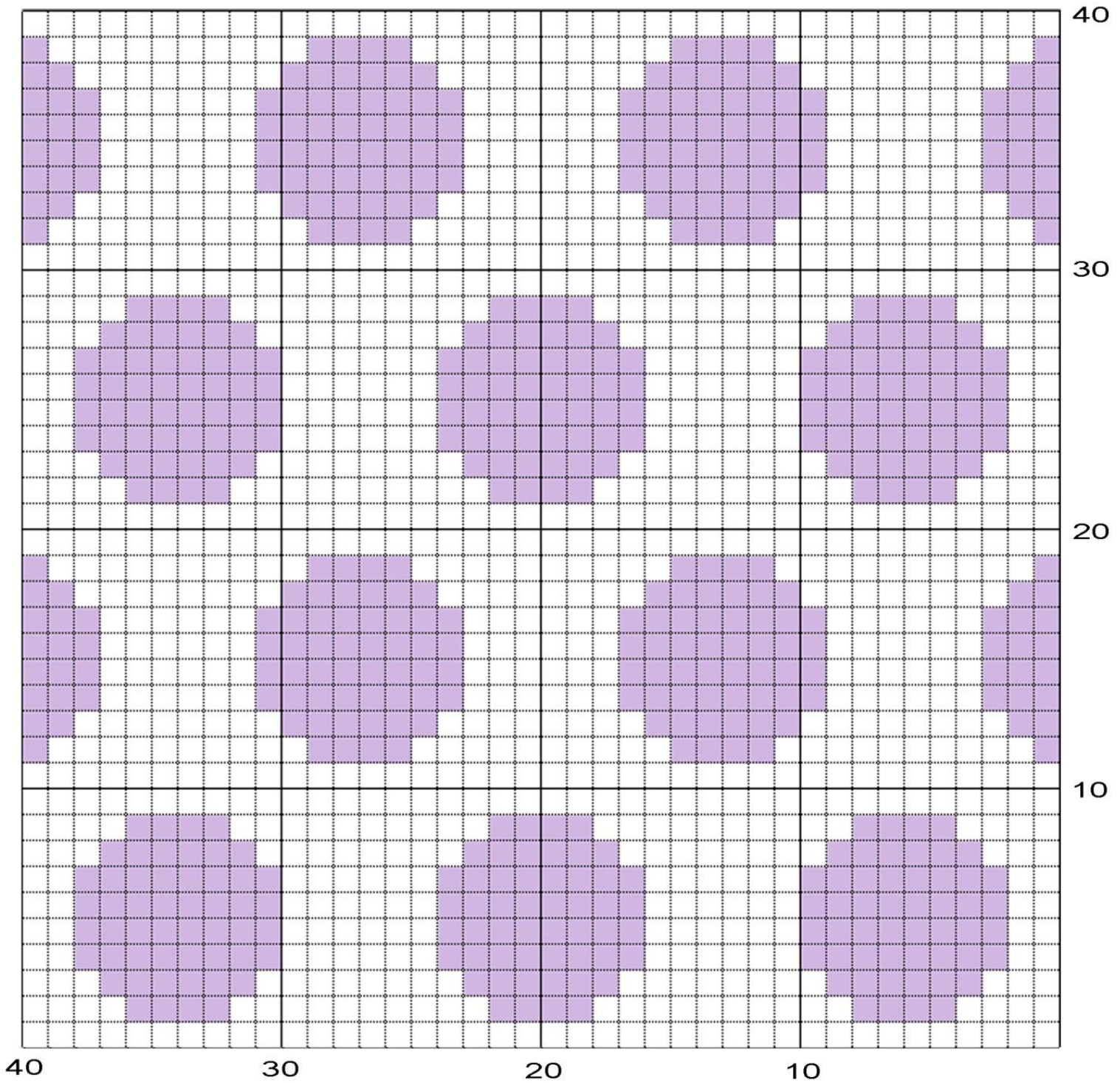
# Leelee Knits

*Knitting and Crochet*



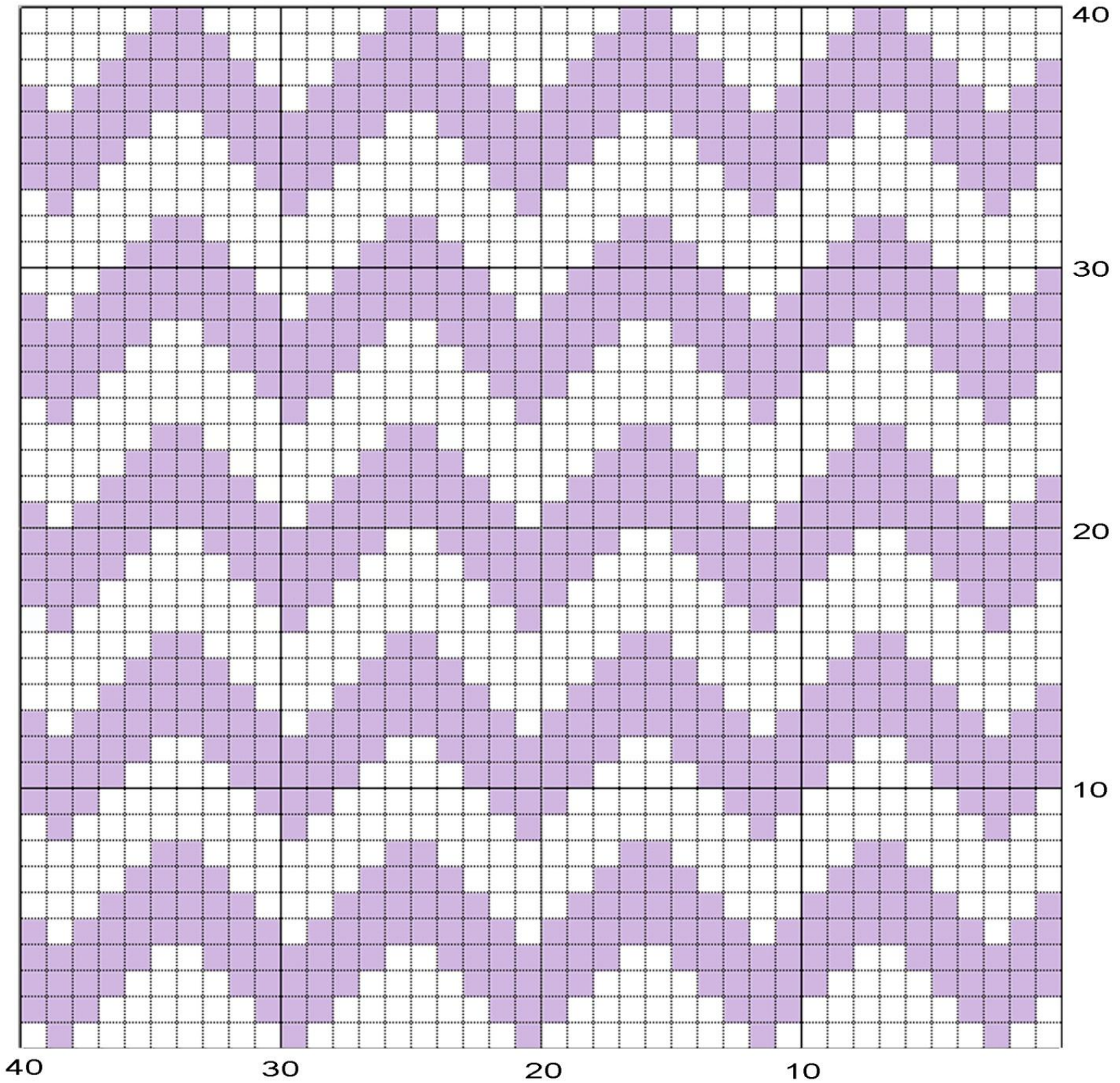
# Leelee Knits

*Knitting and Crochet*



# Leelee Knits

*Knitting and Crochet*



# Leelee Knits

*Knitting and Crochet*

## Border and Finishing:

Work around the border of the washcloth evenly in single crochet. Make sure that you do 3 SC in each corner of the border. When you have completed one round, join to first sc with a slip stitch. Fasten off and weave in the ends!



Leelee Knits  
 Knitting and Crochet

## Slightly Slouchy Hat



This pattern is copyright protected - PLEASE DO NOT COPY, SHARE, ADJUST, OR RESELL.

©2014 – Alnaar Harnish, LeeleeKnits Patterns

# Leelee Knits

 Knitting and Crochet

## Materials:

- Knitpicks [Comfy worsted weight](#) yarn in Seraphim (hat) and Ivory (flower).
- Size H (5 mm) crochet hook.
- Scissors.
- Yarn Needle.

## Abbreviations:

CH: Chain

SC: Single Crochet

DC: Double Crochet

HDC: Half Double Crochet

## Pattern: Child Size

Make a Magic Circle (also called Magic Ring).

Round 1: CH 2, work 11 DC in magic circle, join to first dc with slip stitch (11 stitches total).

Round 2: CH 2, 2 DC in each dc, join to first dc with slip stitch (22 stitches total).

Round 3: CH 2, 2 DC in each dc, join to first dc with slip stitch (44 stitches total).

Round 4: CH 2, 1 DC in each dc, join to first dc with slip stitch (44 stitches total).

Round 5: CH 2, \*2 DC in first dc, 1 DC in next 3 dc, repeat from \* to end of round, join to first dc with slip stitch (55 stitches total).

Round 6: CH2, 1 HDC in each dc to end of round, join to first hdc with slip stitch (55 stitches total).

# Leelee Knits

 Knitting and Crochet

Round 7: CH2, 1 HDC in each hdc to end of round, join to first hdc with slip stitch (55 stitches total).

Round 8: CH2, 1 DC in each hdc to end of round, join to first dc with slip stitch (55 stitches total).

Repeat rounds 6-8 two more times. This will bring you to the end of round 14.

Round 15: CH1, 1 SC in each dc, join to first sc with slip stitch (55 stitches total).

Round 16: CH1, 1 SC in each sc, join to first sc with slip stitch (55 stitches total).

Repeat round 16 four more times. Fasten off and weave in the ends. Make optional flower (instructions on next page) and sew onto hat.

## Pattern: Adult Size

Make a Magic Circle (also called Magic Ring).

Round 1: CH 2, work 12 DC in magic circle, join to first dc with slip stitch (12 stitches total).

Round 2: CH 2, 2 DC in each dc, join to first dc with slip stitch (24 stitches total).

Round 3: CH 2, 2 DC in each dc, join to first dc with slip stitch (48 stitches total).

Round 4: CH 2, 1 DC in each dc, join to first dc with slip stitch (48 stitches total).

Round 5: CH 2, \*2 DC in first dc, 1 DC in next 3 dc, repeat from \* to end of round, join to first dc with slip stitch (60 stitches total).

Round 6: CH2, 1 HDC in each dc to end of round, join to first hdc with slip stitch (60 stitches total).

Round 7: CH2, 1 HDC in each hdc to end of round, join to first hdc with slip stitch (60 stitches total).

Round 8: CH2, 1 DC in each hdc to end of round, join to first dc with slip stitch (60 stitches total).

# Leelee Knits

 *Knitting and Crochet*

Repeat rounds 6-8 two more times. This will bring you to the end of round 14.

Round 15: CH1, 1 SC in each dc, join to first sc with slip stitch (60 stitches total).

Round 16: CH1, 1 SC in each sc, join to first sc with slip stitch (60 stitches total).

Repeat round 16 five more times. Fasten off and weave in the ends. Make optional flower and sew onto hat.

# Leelee Knits

*Knitting and Crochet*

## Flower:

Make a magic circle.

Round 1: CH4, \*(1 DC, 1 CH) into magic circle, repeat from \* 5 more times, join into 3rd ch of the initial ch4 with a slip stitch (7 chain spaces).



Round 2: CH1, \*(1 SC, 3 DC, 1 SC) into chain space, repeat from \* 6 more times (7 petals), join with a slip stitch into first sc.



# Leelee Knits

*Knitting and Crochet*

Round 3: This round is worked in the back of the first layer of petals. CH1, 1 SC into the back sc stem of the last and first sc of round 2, \*CH 3, 1 SC into next pair of sc stems, repeat from \*around and finish with a CH3. Join to the first sc with a slip stitch (7 chain spaces behind petals).



Round 4: CH1, \*(1 SC, 5 DC, 1 SC) into chain space, repeat from \* 6 more times (second layer of 7 petals), join with slip stitch to first sc and fasten off.



## Luxurious Wash Cloth Crochet Pattern



This pattern is copyright protected - PLEASE DO NOT COPY, SHARE, ADJUST OR RESELL the pattern.

### Materials

- A size H-8 (5 mm) Crochet Hook
- 70 yards of Knit Picks Dishie Yarn
- Scissors

### Measurements

Each washcloth measures 7" X 7"

# Leelee Knits

*Knitting and Crochet*

## Pattern

Chain 25 (or a multiple of 2 + 1).

Row 1: SC in 2nd chain from hook and in each remaining chain. CH1 and turn.

Row 2: \*Skip next sc, 2SC in next sc; repeat from \* to end of row. CH1 and turn.

Repeat row 2 until your work measures just under 7 inches (should look square) and continue on to border.



# Leelee Knits

*Knitting and Crochet*

## Border:

Work around the border of the cloth evenly in single crochet. Make sure that you do 3 SC in each corner of the border. When you have completed one round, join to first sc with a slip stitch. Fasten off and weave in the ends!



## Textured Accent Pillow Cover



This pattern is copyright protected - PLEASE DO NOT COPY, SHARE, ADJUST OR RESELL the pattern.

### Materials:

- Size H-8 (5 mm) Crochet Hook
- Knit Picks Mighty Stitch Yarn
- 1.5 Skeins Sky
- 1.5 Skeins White
- 1.5 Skeins Mint
- 1.5 Skeins Blush
- Scissors
- Tapestry/Yarn needle to sew up seams
- Two 14" X14" Pillow Forms

# Leelee Knits

*Knitting and Crochet*

## Measurements:

Each square will measure 14" X 14"

## Special Stitches:

FPDC: Front Post Double Crochet

BPDC: Back Post Double Crochet



# Leelee Knits

*Knitting and Crochet*

## Pattern:

This pattern is for two 14" X 14" pillow covers. If you would like to make the cover larger, you can chain a multiple of 6 plus 5. The beginning chain should be at least the length of the pillow form width.

You will be making 4 squares by following the pattern below for each colour:

Chain 59.

Row 1 (WS): DC in fourth chain from hook and in each remaining chain. CH3 (counts as first DC of following row) and turn.

Row 2: FPDC around each of the first 2 dc; \* BPDC around each of the next 3 dc, FPDC around each of the next 3 dc; repeat from \* to end of row; CH3 and turn.

Repeat row 2 until work measures 14 inches. Fasten off.

See diagram below for visual.



# Leelee Knits

*Knitting and Crochet*

## Finishing:

Now that you have four squares (one for each pillow side), choose two colours that you would like on the same pillow. Note that you will not see the two colours of the same pillow together, so you should lay them out and see what combinations look best to you.

Line up the two squares and sew up the seams for three sides of the pillow cover using some extra yarn and a tapestry (yarn) needle. Insert the pillow form and continue to sew up the last side. Weave in the loose ends.



Leelee Knits  
*Knitting and Crochet*

## Bloom Granny Afghan Crochet Pattern



This pattern is copyright protected - PLEASE DO NOT COPY, SHARE, ADJUST OR RESELL the pattern.

# Leelee Knits

 Knitting and Crochet

## Materials:

Here is what you will need to make this fun springtime throw:

- A size H-8 (5 mm) Crochet Hook
- Knit Picks Mighty Stitch Yarn
- 2 Skeins Cotton Candy (Color A)
- 3 Skeins Blush (Color B)
- 5 Skeins Cream (Color C)
- Scissors
- Tapestry/Yarn needle to weave in ends

## Measurements:

Finished blanket measures: 33" X 50".

## Gauge:

Each square measures 3.5" X 3.5".

## Special Stitches:

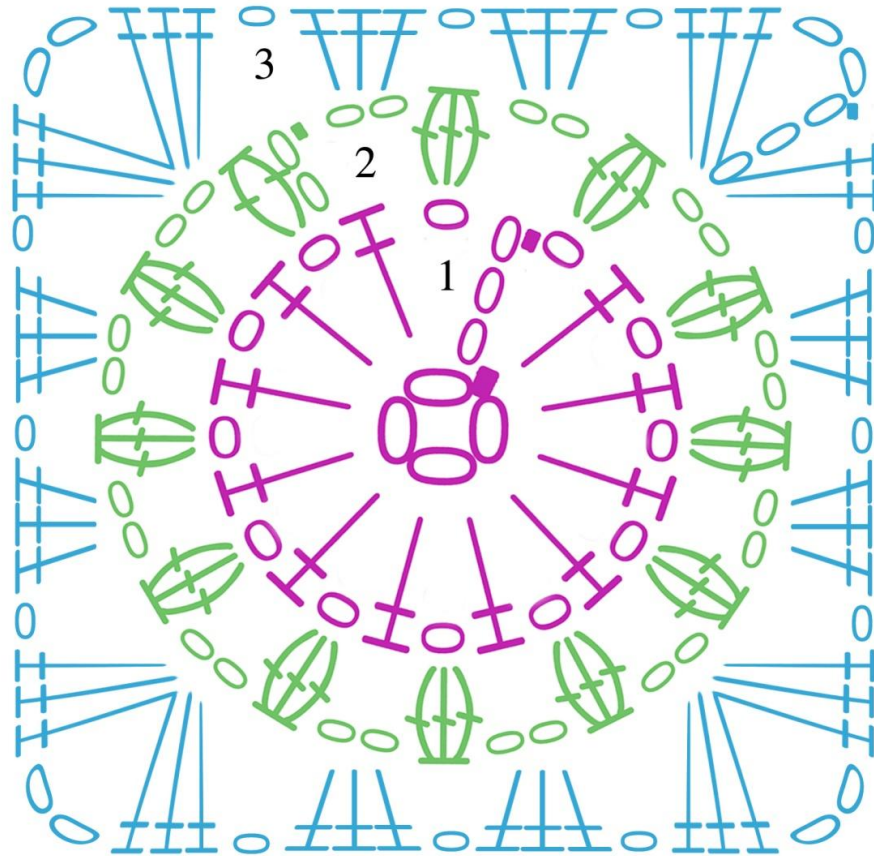
Cluster Stitch (CL) \*Yarn Over, insert hook into specified stitch and draw up a loop to the height of a DC; Yarn Over and draw through two loops; repeat from \* two more times in same stitch; Yarn Over and draw through all four loops remaining on hook.

2-DC Cluster Stitch (2-DCCL) \*Yarn Over, insert hook into specified stitch and draw up a loop to the height of a DC; Yarn Over and draw through two loops; repeat from \* one more time in same stitch; Yarn Over and draw through all three loops remaining on hook.

# Leelee Knits

*Knitting and Crochet*

## Stitch Diagram:



# Leelee Knits

 Knitting and Crochet

## Pattern:

**Note: When joining and fastening off the yarn, make sure to leave a 4 inch tail so that it is easy to weave in the ends.**

### Foundation Ring and Round 1:

With color A, CH4 and join the last stitch to the first with a slip stitch to make a ring.

Continuing with the same yarn, CH 4 (counts first 1DC, CH1). Work 1DC, CH1 (11 times) in foundation ring (you will have a total of 12 DC separated by CH1 spaces). Join last CH1 to top of first DC with a slip stitch and fasten off.

### Round 2:

With color B, join yarn in any ch1 space from previous round. CH2, and work one 2-DCCL in the same space. \*CH2 and work one CL in next ch1 space; repeat from \* to last ch1 space; work one CL in last ch1 space, CH2 and join to top of first CL with slip stitch (total of 12 clusters separated by ch2 spaces). Fasten off.

### Round 3:

With color C, join in any ch2 space from previous round. CH5 (counts as 1DC, CH2 for first corner of square), and work 3 DC in same ch2 space. \*CH1, 3DC in next ch2 space; CH1, 3DC in next ch2 space; CH1, 3DC in next ch2 space, CH2, 3DC in same ch2 space. Repeat from \* two more times. CH1, 3DC in next ch2 space; CH1, 3DC in next ch2 space; CH1, 2DC in beginning ch2 space (this is the first corner space) and join to 3rd ch in beginning ch5 with slip stitch. Fasten off and weave in all ends.

## Assembly and Border:

Assemble the squares so that you have 14 rows and 9 columns using whichever method you prefer. I use the join as you go method, which creates a pretty braided look between the squares and doesn't require sewing – which is an added bonus. I have included a [bonus video tutorial](#) that demonstrates the join as you go method.

Direct link to join as you go tutorial: <https://youtu.be/wbWpmE4lw70>

Once all of the squares have been assembled, work around the border of the blanket in single crochet. After you have completed one round of single crochet, work two more rounds of half double crochet. Fasten off and weave in all loose ends.



Leelee Knits  
*Knitting and Crochet*

## 20 Minute Crochet Headband



This pattern is copyright protected - PLEASE DO NOT COPY, SHARE, ADJUST OR RESELL the pattern.

©2015 – LeeleeKnits Patterns

# Leelee Knits

*Knitting and Crochet*

## Materials:

Here is what you will need to make this fun and quick headband:

- A size H (5 mm) crochet hook.
- Vanna's Choice Worsted weight yarn in Pink (101).
- Scissors
- Yarn Needle

## Pattern:

This pattern is worked in the round.

Chain 60

Join to form a loop using a slip stitch. Be very careful not to twist the chain as you do the join.

Round 1: CH1 and SC all the way around starting in the first stitch that you joined with the slip stitch. When you finish the round, count to make sure there are 60 stitches. Join with a slip stitch in the first stitch of the round.

Round 2: CH 2, \*skip first 2 sc, [1DC, CH1, 1DC] in next sc, rep from \* to end of round, join to first dc with slip stitch.

Round 3: CH 2, 3 DC in each ch-1 space all the way around, join to first dc with slip stitch.

Round 4: CH 2, \*skip first 2 dc, [1DC, CH1, 1DC] in next dc, rep from \* to end of round, join to first dc with slip stitch.

Round 5: CH1, 1 SC in each stitch all the way around, join to first sc with slip stitch.

Fasten off and weave in ends

