

## Springtime Washcloths



This pattern is copyright protected - PLEASE DO NOT COPY, SHARE, ADJUST, OR RESELL.

# Leelee Knits

 Knitting and Crochet

## Materials:

Here is what you will need to make all three washcloths:

- Size D/3 (3.25 mm) crochet hook.
- Paintbox Yarns Cotton DK (100% Cotton):
  - 1.5 Skeins Champagne White.
  - One Skein Pale Lilac.
- Stitch Marker.
- Scissors.
- Yarn Needle.

## Measurements:

Each cloth measures 7.5" X 7.5".

## Gauge:

6 stitches X 6 Rows = 1" in single crochet.

## Abbreviations:

CH: Chain

SC: Single Crochet

# Leelee Knits

 Knitting and Crochet

## Notes before you start:

The washcloths are created using the tapestry crochet technique.

Video Tutorial: [How to Crochet with Two Colors - Reversible Tapestry Crochet](#)

When reading the pattern grid, note that the odd numbered rows are the right side, and the even numbered rows are the wrong side.

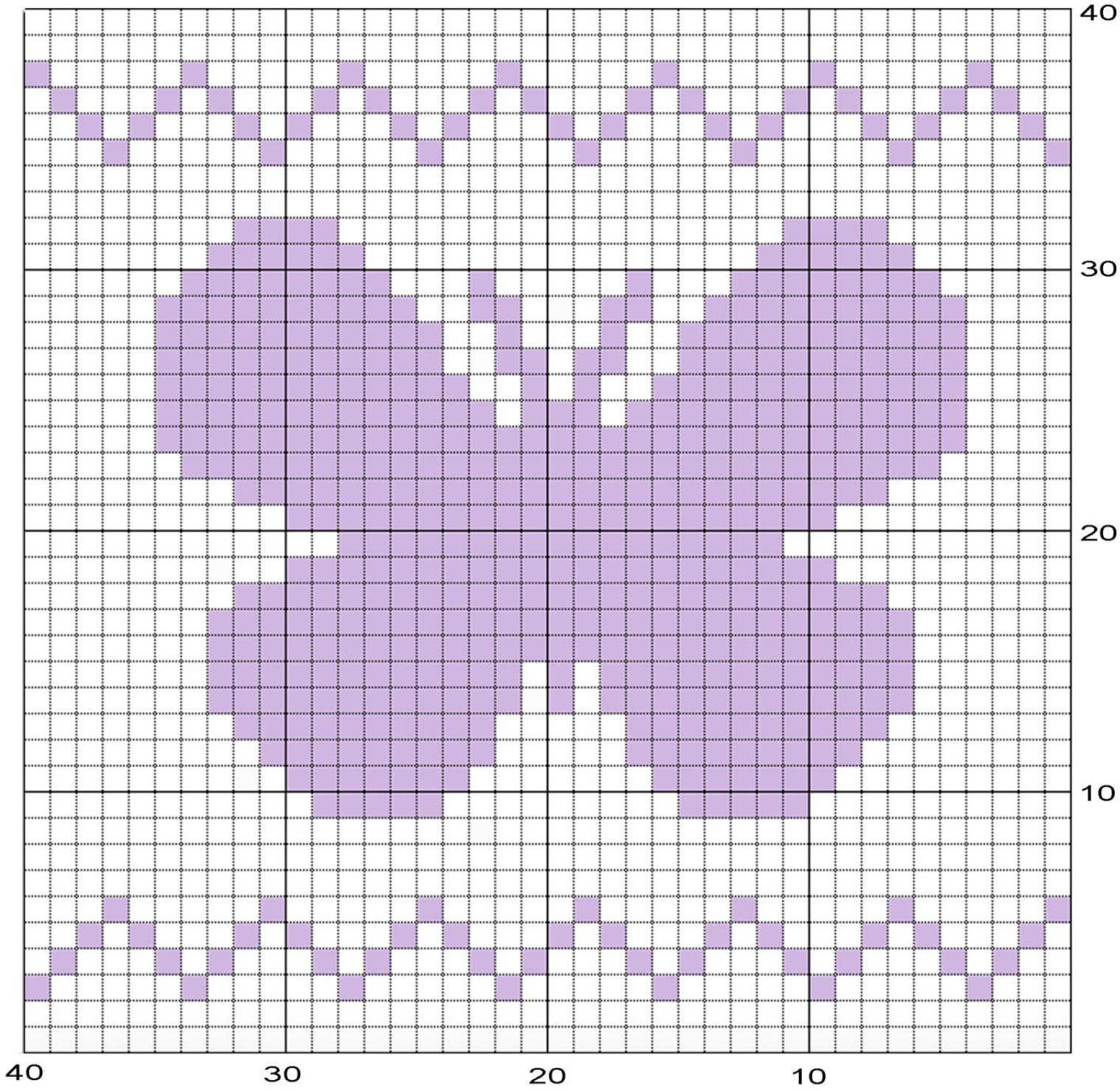
- It's a good idea to print the grid and highlight the rows as they are completed.
- Right side rows are to be read right to left
- Wrong side rows are to be read left to right
- All rows are worked with both strands of yarn to keep the gauge and tension consistent. It is best to crochet tightly to avoid the second color being seen through the stitches.
- When working a right side row, hold secondary yarn color to the back of your work.
- When working a wrong side row, hold secondary yarn color to the front of your work.
- Crochet over the second yarn (yarn not in use) when working each SC to avoid floats and make washcloths reversible.

## Washcloth Patterns:

With Main Color, CH 41 (40 plus 1 for turning chain). Work all stitches in single crochet (plus one turning chain at the end of each row). Follow color charts below starting at bottom right for row 1. Each cell represents one SC and each row represents one row of crochet.

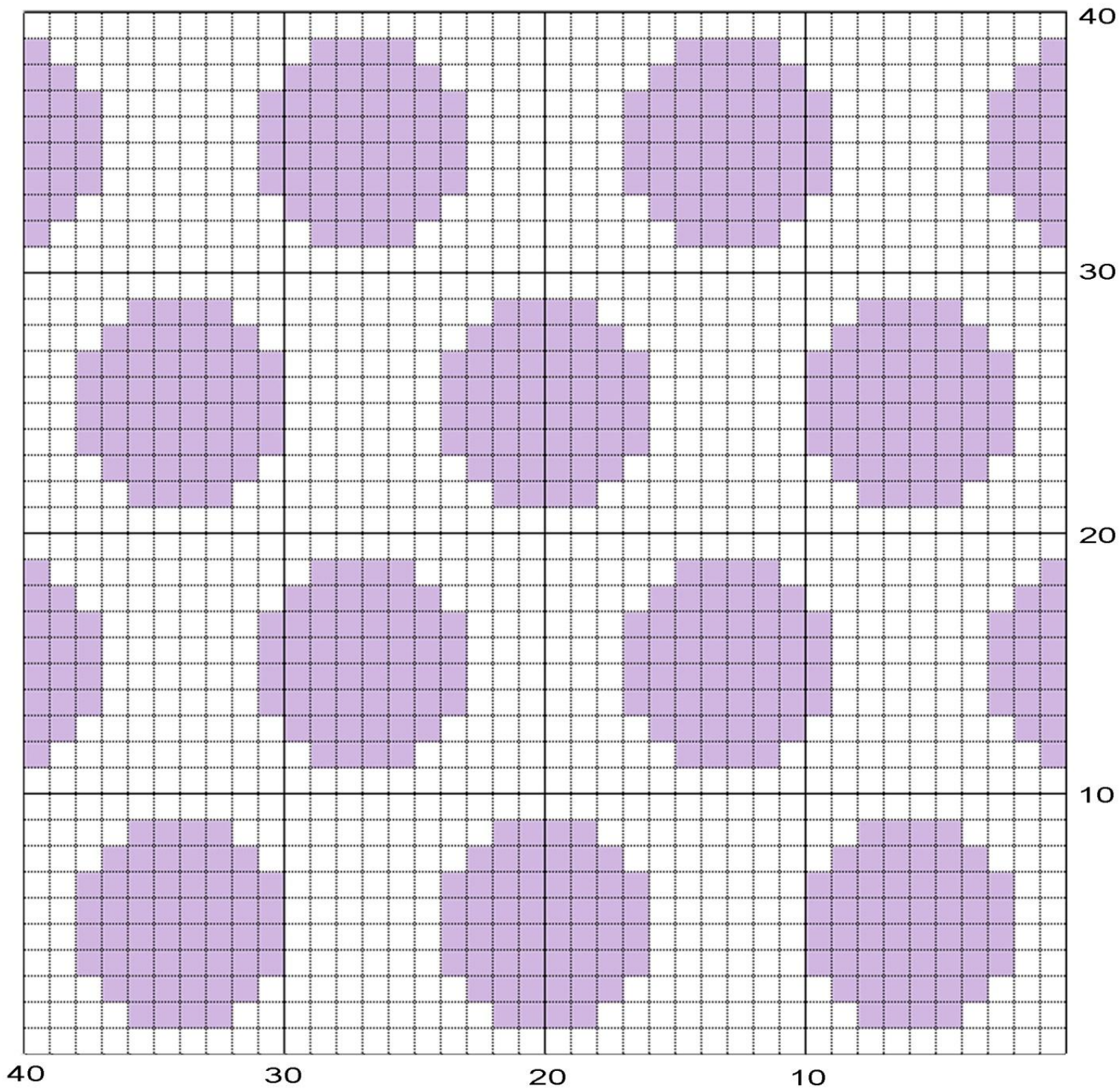
# Leelee Knits

*Knitting and Crochet*



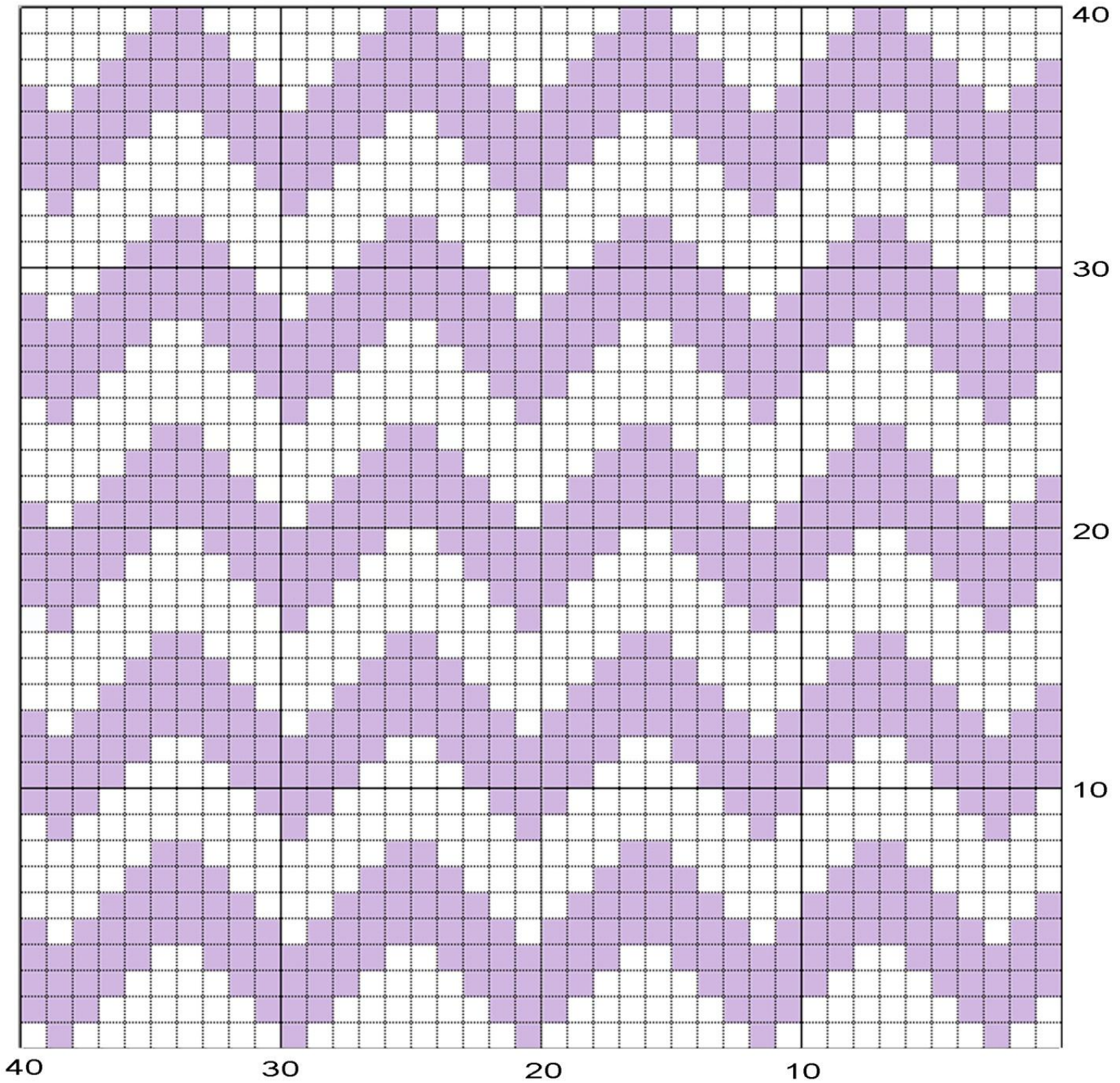
# Leelee Knits

*Knitting and Crochet*



# Leelee Knits

*Knitting and Crochet*



# Leelee Knits

*Knitting and Crochet*

## Border and Finishing:

Work around the border of the washcloth evenly in single crochet. Make sure that you do 3 SC in each corner of the border. When you have completed one round, join to first sc with a slip stitch. Fasten off and weave in the ends!

