

Holiday Potholders



This pattern is copyright protected - PLEASE DO NOT COPY, SHARE, ADJUST OR RESELL the pattern.

Leelee Knits

 Knitting and Crochet

Materials:

Here is what you will need to make two potholders:

- Size D/3 (3.25 mm) crochet hook.
- Paintbox Yarns Cotton DK (100% Cotton):
 - One Skein Champagne White
 - One skein Granite Grey
- Stitch Marker.
- Scissors.
- Yarn Needle.

Measurements:

Each potholder measures 7.5" X 7.5".

Gauge:

6 stitches X 6 Rows = 1" in single crochet.

Abbreviations:

CH: Chain

SC: Single Crochet

Leelee Knits

 Knitting and Crochet

Notes before you start:

The potholders are created using the tapestry crochet technique.

Video Tutorial: [How to Crochet with Two Colors - Reversible Tapestry Crochet](#)

When reading the pattern grid, note that the odd numbered rows are the right side, and the even numbered rows are the wrong side.

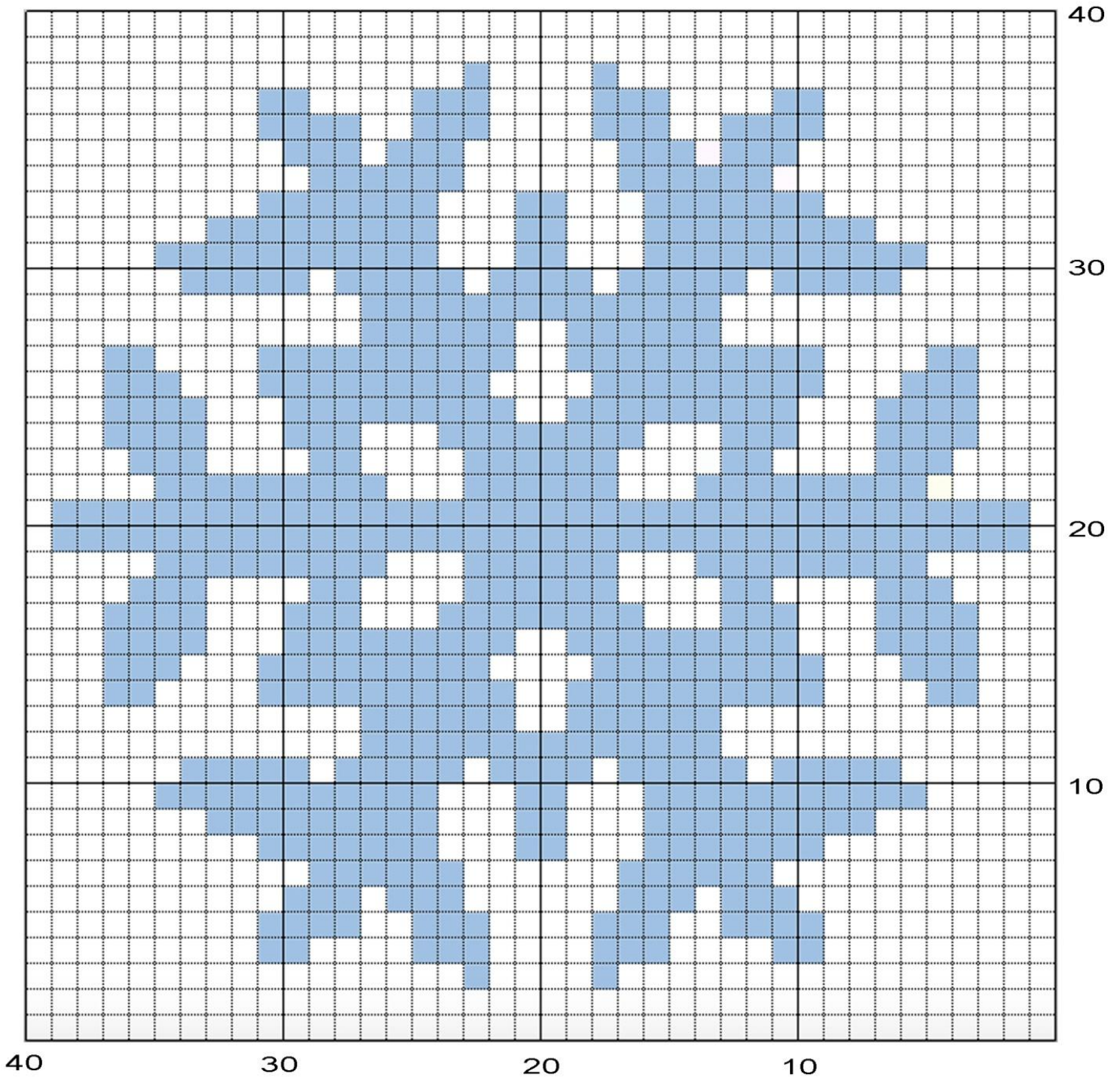
- It's a good idea to print the grid and highlight the rows as they are completed.
- Right side rows are to be read right to left
- Wrong side rows are to be read left to right
- All rows are worked with both strands of yarn to keep the gauge and tension consistent. It is best to crochet tightly to avoid the second color being seen through the stitches.
- When working a right side row, hold secondary yarn color to the back of your work.
- When working a wrong side row, hold secondary yarn color to the front of your work.
- Crochet over the second yarn (yarn not in use) when working each SC to avoid floats and make potholders reversible.

Potholder Patterns:

With Main Color, CH 41 (40 plus 1 for turning chain). Work all stitches in single crochet (plus one turning chain at the end of each row). Follow color charts below starting at bottom right for row 1. Each cell represents one SC and each row represents one row of crochet.

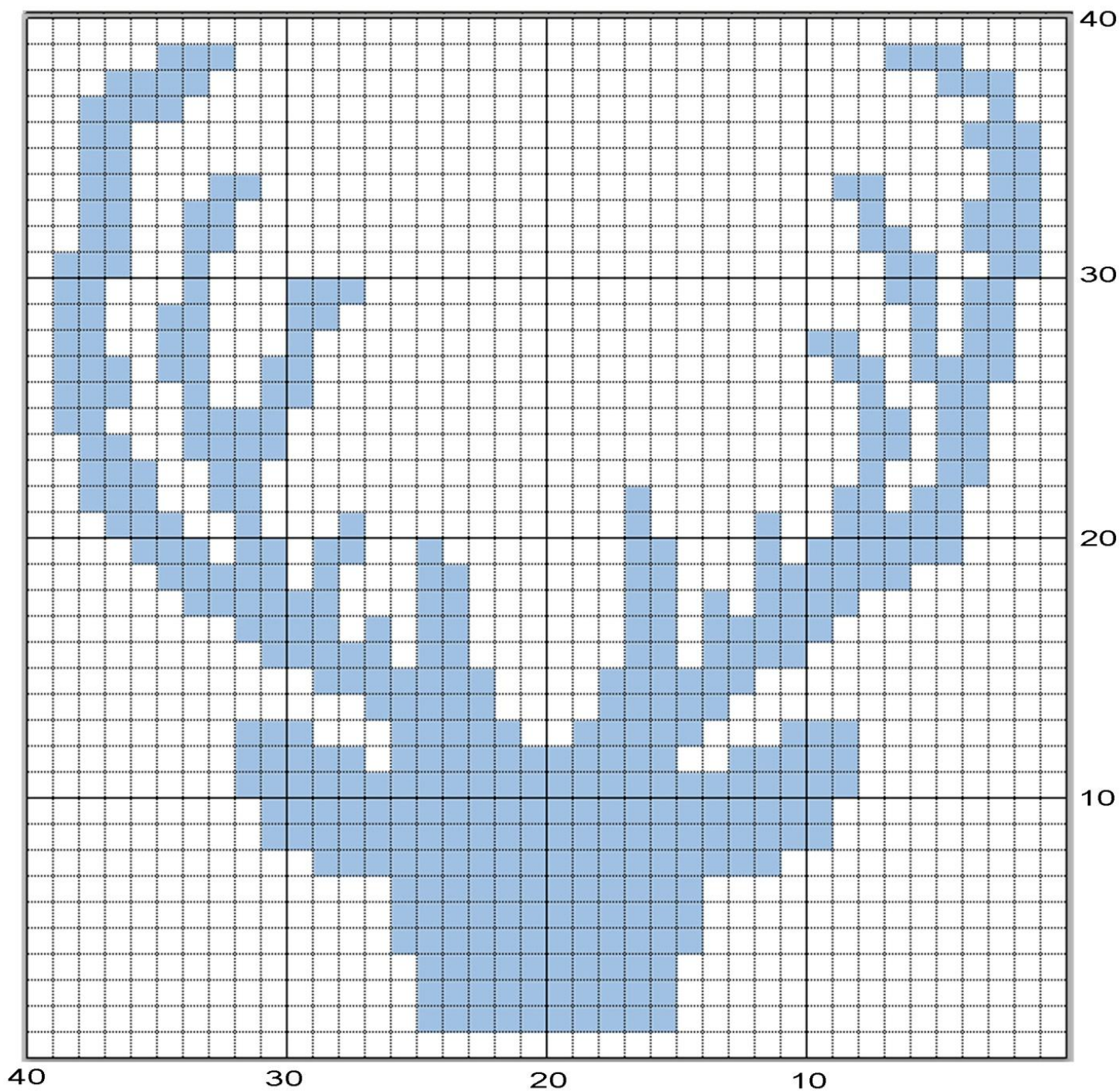
Leelee Knits

Knitting and Crochet



Leelee Knits

Knitting and Crochet



Leelee Knits

Knitting and Crochet

Border and Finishing:

Work around the border of the potholder evenly in single crochet. Make sure that you do 3 SC in each corner of the border. When you have completed one round, join to first sc with a slip stitch. Fasten off and weave in the ends!

