



Yogi Throw Pillows Pattern



This pattern is copyright protected - PLEASE DO NOT COPY, SHARE, ADJUST OR RESELL the pattern.

Materials (for two throw pillows):

- A size H-8 (5 mm) Crochet Hook
- Paintbox Yarns Simply Chunky Yarn
 - 8 Skeins Misty Grey (Color A)
 - 1 Skein Pure Black (Color B)
- Scissors
- Two 18" X 18" Pillow Forms
- Tapestry/Yarn needle to weave in ends

Measurements:

Each square panel measures 18" X 18" for an 18" X18" throw pillow. You can use a different sized hook and weight of yarn to alter the pattern for a larger or smaller pillow size. Another option is to add (or remove) stitches at the sides and top of pattern.

Gauge:

3.25 stitches X 3.25 Rows = 1 inch in single crochet.

Abbreviations:

SC: Single Crochet

CH: Chain



Pattern Notes:

The front panel of the throw pillow is worked using the tapestry crochet technique. If you are not familiar with tapestry crochet, it's a good idea to view my [online tutorial](#) before you start.

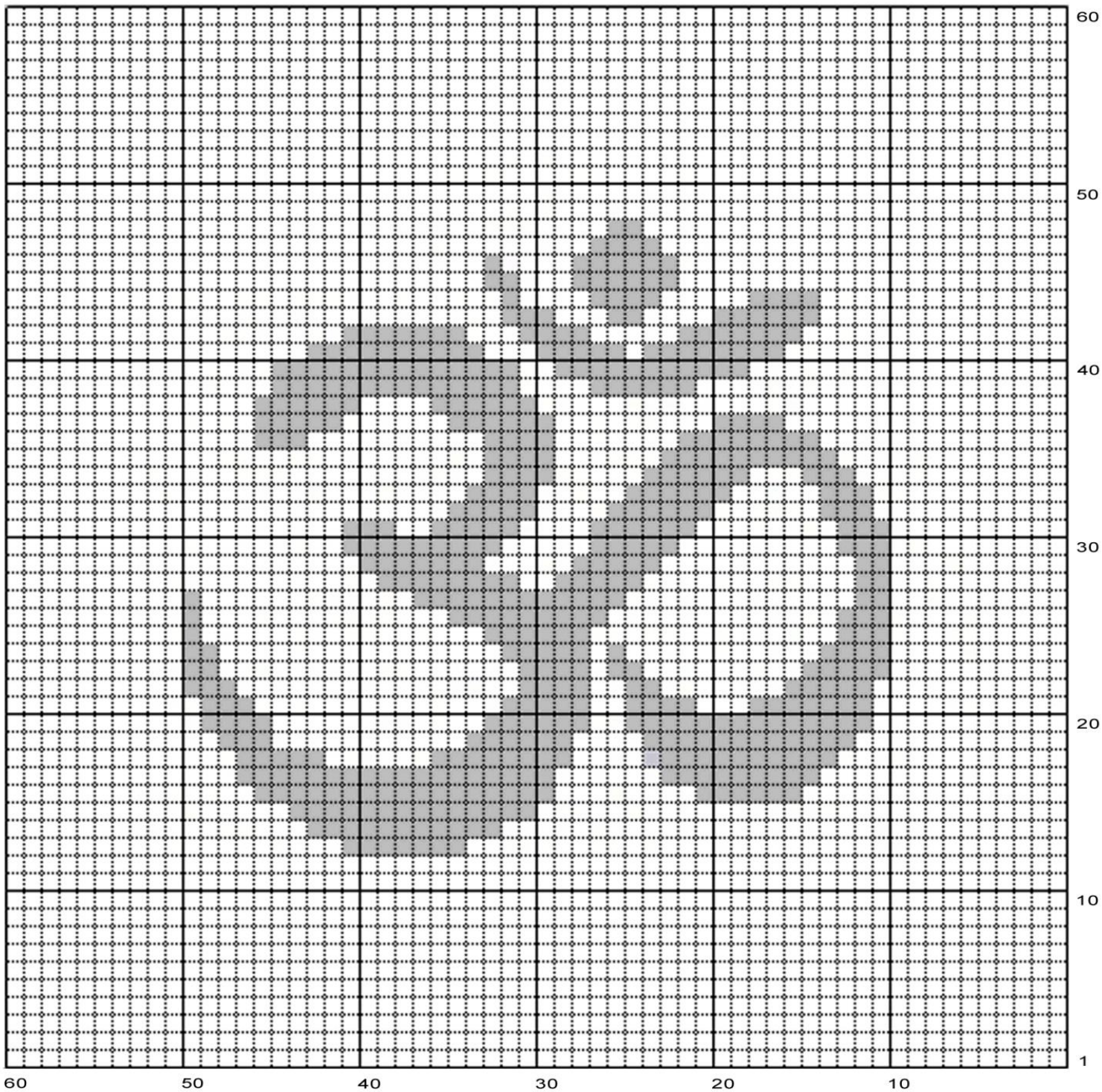
- When reading the pattern grid, note that the odd numbered rows are the right side, and the even numbered rows are the wrong side.
- It's a good idea to print the grid and highlight the rows as they are completed.
- Right side rows are to be read right to left
- Wrong side rows are to be read left to right
- All rows are worked with both strands of yarn to keep the gauge and tension consistent. It is best to crochet tightly to avoid the second color being seen through the stitches.
- When working a right side row, hold Color B yarn to the back of your work.
- When working a wrong side row, hold Color B yarn to the front of your work.
- Crochet over the second yarn (yarn not in use) when working each SC to avoid floats (this is not necessary for the pillow covers but the end result looks neater and is reversible).

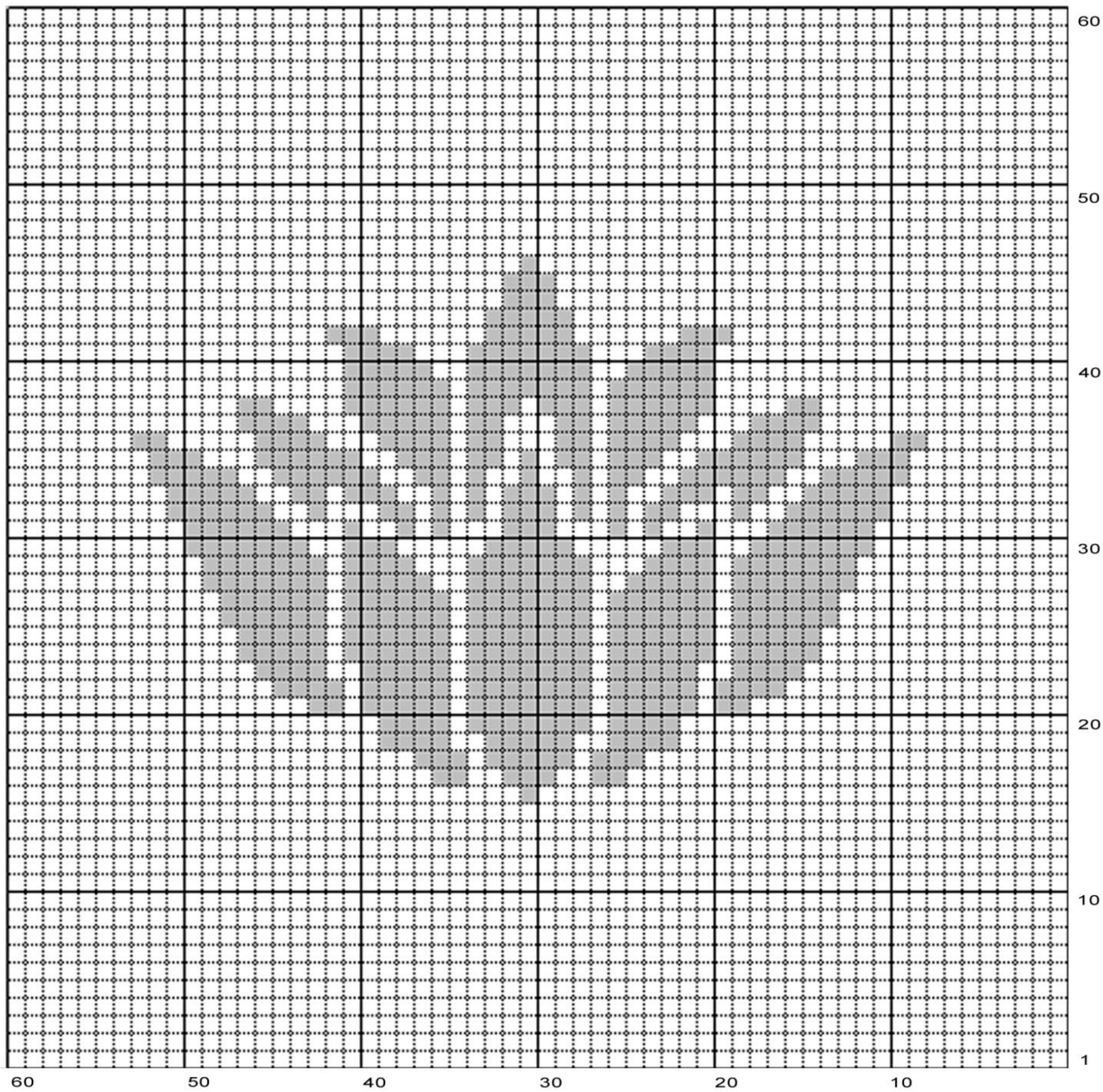
Back Panels (make one for each pillow):

With Color A, CH 61 (60 plus 1 for turning chain). Work all stitches in single crochet (plus one turning chain at the end of each row) for 60 rows. Fasten off.

Front Panels:

With Color A, CH 61 (60 plus 1 for turning chain). Work all stitches in single crochet (plus one turning chain at the end of each row). Follow grids below starting at bottom right for row 1 and changing to Color B for the grey cells. Each cell represents one SC and each row represents one row of crochet.





Finishing:

Weave in any loose ends.

Line up the front and back panels (make sure the right sides are facing outwards) and seam the sides of the cover together using whichever seaming method you prefer (I used the single crochet seaming method to avoid sewing). After you have seamed 3 of the sides, insert the pillow form and continue to seam up the last side.

