

Nautical Washcloths



This pattern is copyright protected - PLEASE DO NOT COPY, SHARE, ADJUST OR RESELL the pattern.

Materials

The following materials are required to make a set of 4 washcloths.

- A size H-8 (5 mm) Crochet Hook
- Knit Picks Shine Worsted Weight Yarn
Fiber Content: 60% Pima Cotton, 40% Modal® natural beech wood fiber
 - 4 Skeins Cream
 - 4 Skeins Clarity
- Scissors
- Tapestry/Yarn needle to weave in ends

Measurements:

Each cloth measures 9" X 9".

Gauge:

4.5 stitches X 4.5 Rows = 1" in single crochet.

Abbreviations:

SC: Single Crochet

CH: Chain

Pattern Notes:

The cloths are created using the tapestry crochet technique.

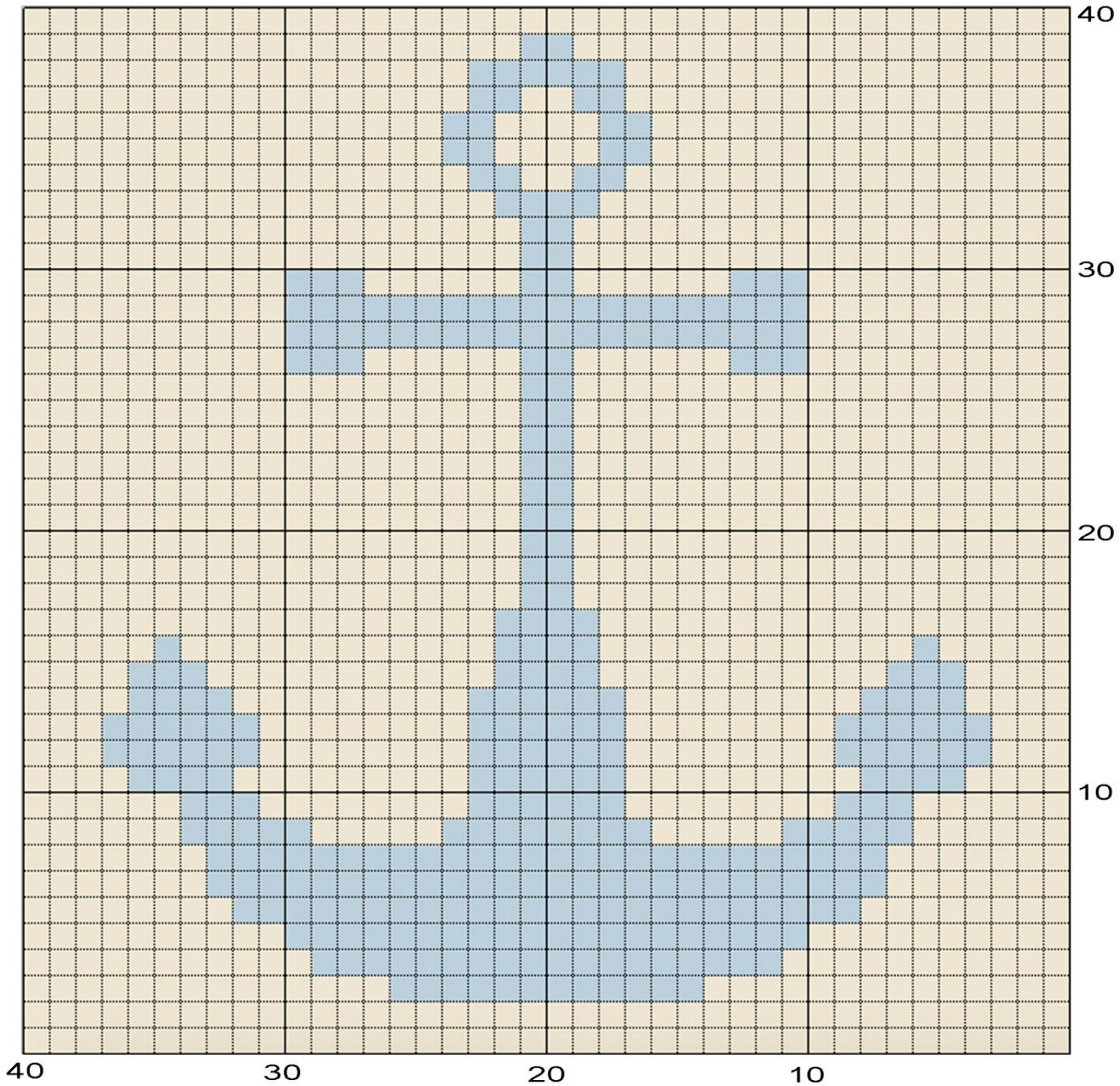
Video Tutorial: [How to Crochet with Two Colors - Reversible Tapestry Crochet](#)

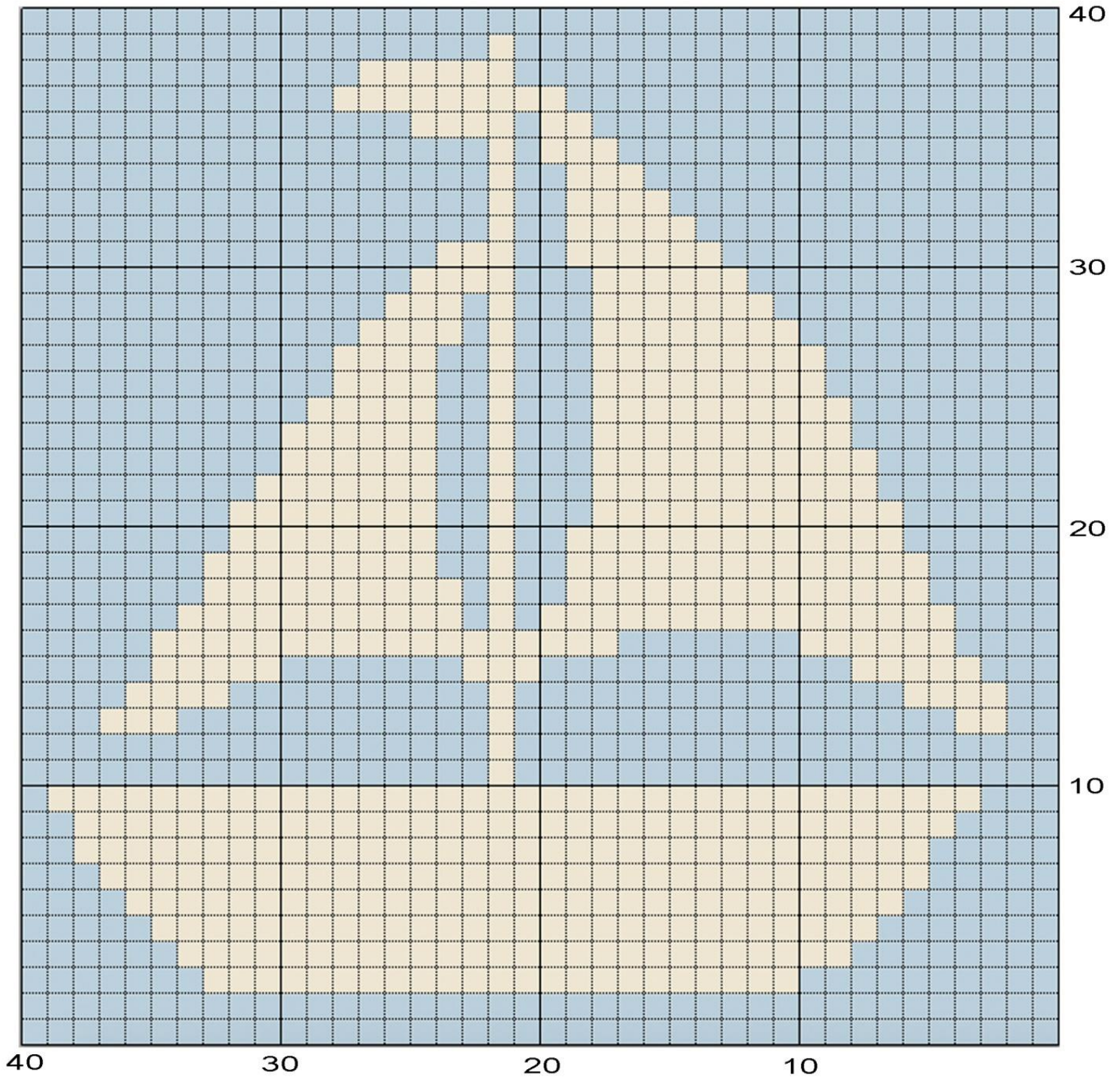
When reading the pattern grid, note that the odd numbered rows are the right side, and the even numbered rows are the wrong side.

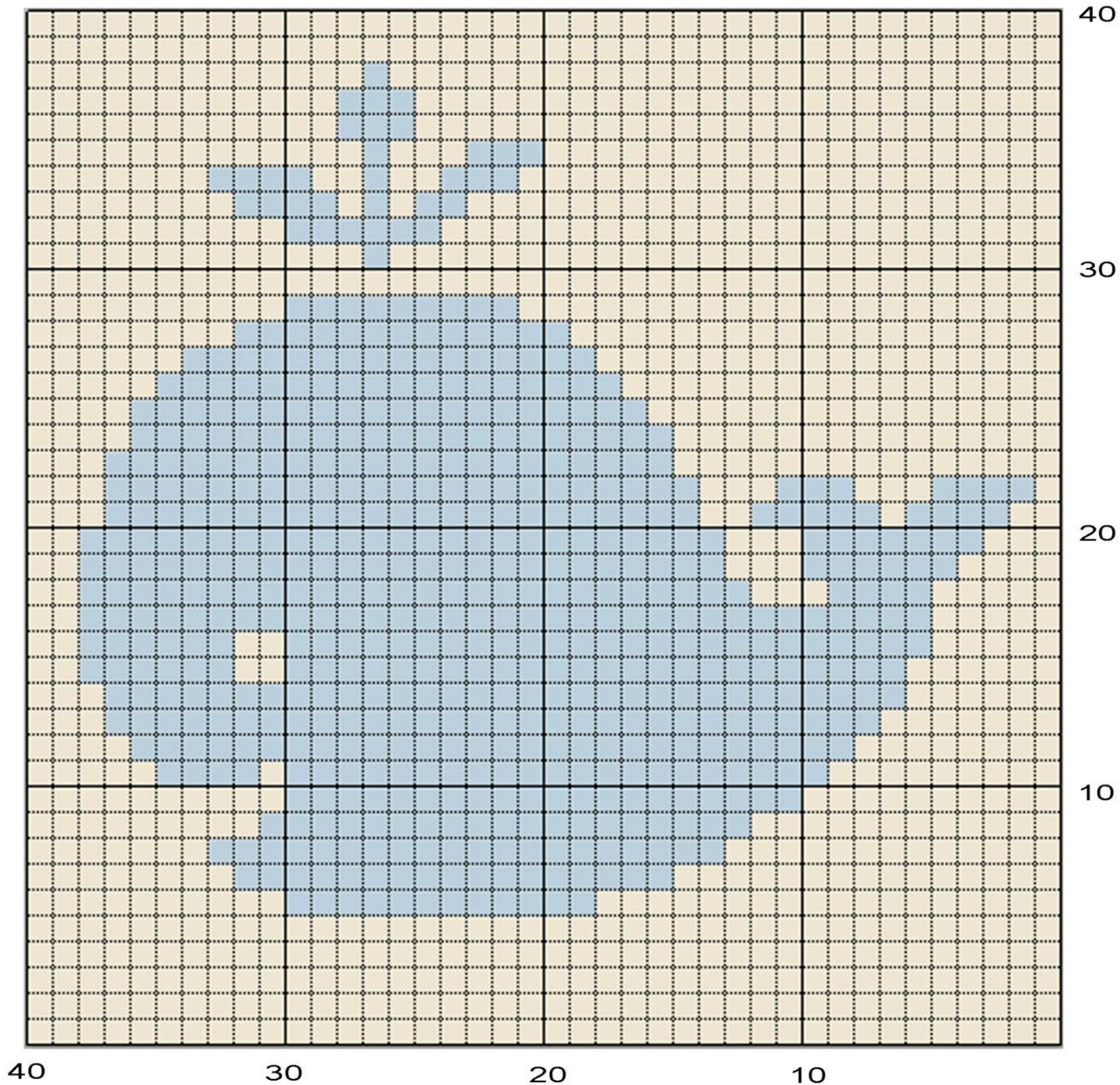
- It's a good idea to print the grid and highlight the rows as they are completed.
- Right side rows are to be read right to left
- Wrong side rows are to be read left to right
- All rows are worked with both strands of yarn to keep the gauge and tension consistent. It is best to crochet tightly to avoid the second color being seen through the stitches.
- When working a right side row, hold secondary yarn color to the back of your work.
- When working a wrong side row, hold secondary yarn color to the front of your work.
- Crochet over the second yarn (yarn not in use) when working each SC to avoid floats and make wash cloth reversible.

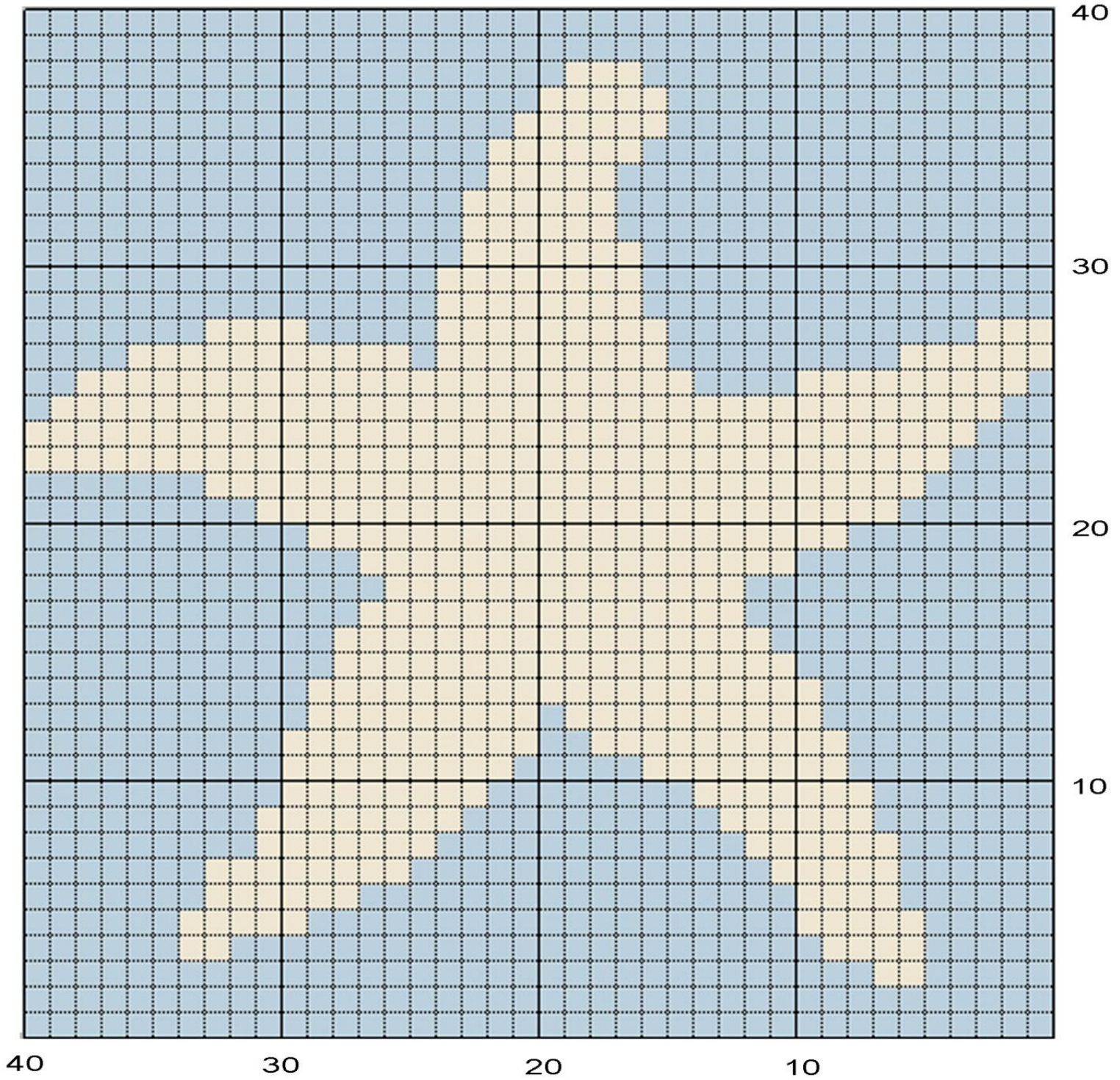
Washcloth Patterns:

With Main Color, CH 41 (40 plus 1 for turning chain). Work all stitches in single crochet (plus one turning chain at the end of each row). Follow color charts below starting at bottom right for row 1. Each cell represents one SC and each row represents one row of crochet.











Border and Finishing

Work around the border of the cloth evenly in single crochet. Make sure that you do 3 SC in each corner of the border. When you have completed one round, join to first sc with a slip stitch. Fasten off and weave in the ends!

